

G	corrections	12/05/2006	JMN		
F	CORRECTIONS	03/04/2006	JMN		
E	MODIF DIVERSES	27/02/2006	JMN		
D	CHANGEMENT AMPLI AMP1	08/11/2005	JMN		
C	Edition originale	23/09/2005	JMN		
B			JMN		
A		29/09/2003			
INDICE	MODIFICATION	DATE	DESSINE	VERIFIE	APPROUVE



DESSINE: CJ  
 VERIFIE: JMN  
 DATE DE CREATION:  
 AFFAIRE N°:

## BM10 -BANC DE TESTS

PAGE DE GARDE  
 Schéma électrique

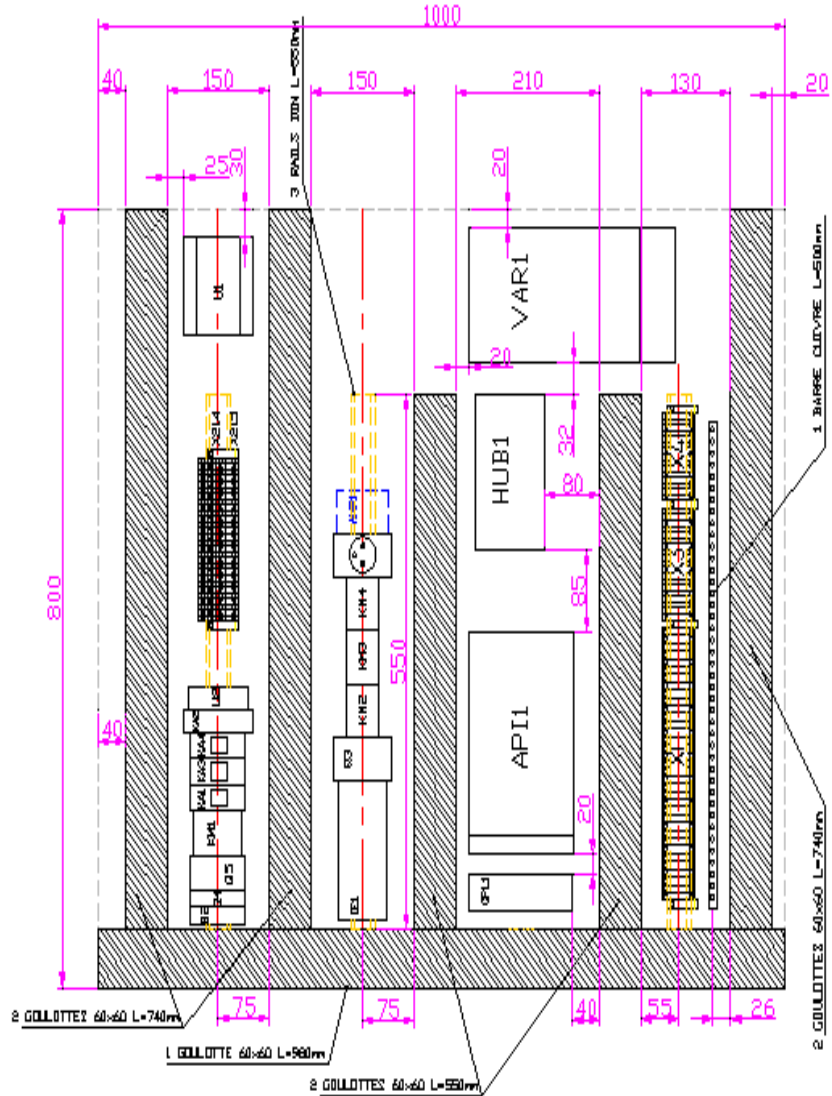
SCBM1000001D

0 / 24

### CODE DE DESIGNATION DES COULEURS (NFC 04-201)

CODE	COULEUR	CODE	COULEUR
BK	NOIR	GY ou G7	GRIS
BN	BRUN (MARRON)	WH	BLANC
RD	ROUGE	PK	ROSE
OG	ORANGE	GD	OR
YE	JAUNE	TQ	TURQUOISE
GN	VERT	SR	ARGENT
BU	BLEU	GNYE	VERT ET JAUNE
VT	VIOLET(POURPRE)		

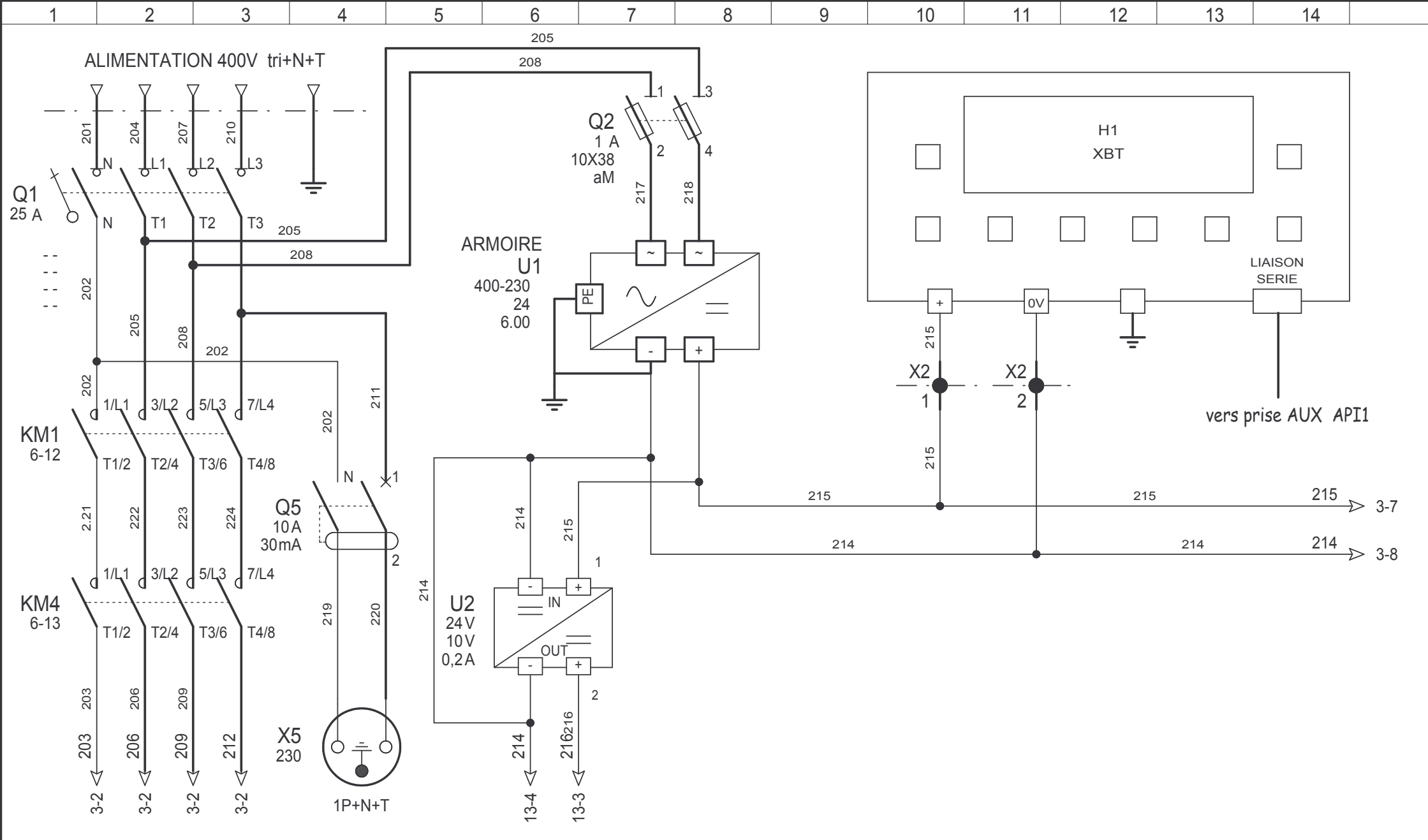
- Combinaison des couleurs pour un même élément: juxtaposer les codes dans l'ordre du tableau ( RD/BU pour rouge et bleu).
- Combinaison des couleurs pour des éléments différents: separer les codes par un signe + ( RD+BU pour un câble comportant un fil rouge et un fil bleu).



BM10 -BANC DE TESTS  
 IMPLANTATION ARMOIRE

Etabli par: EX	Date : 29/09/2003	SCBM1000001D	
Modifications		Date	Etabli par
MODIF DIVERSES		29/09/2003	JMN
CORRECTIONS		27/02/2006	JMN
corrections		03/04/2006	JMN
		12/05/2006	JMN

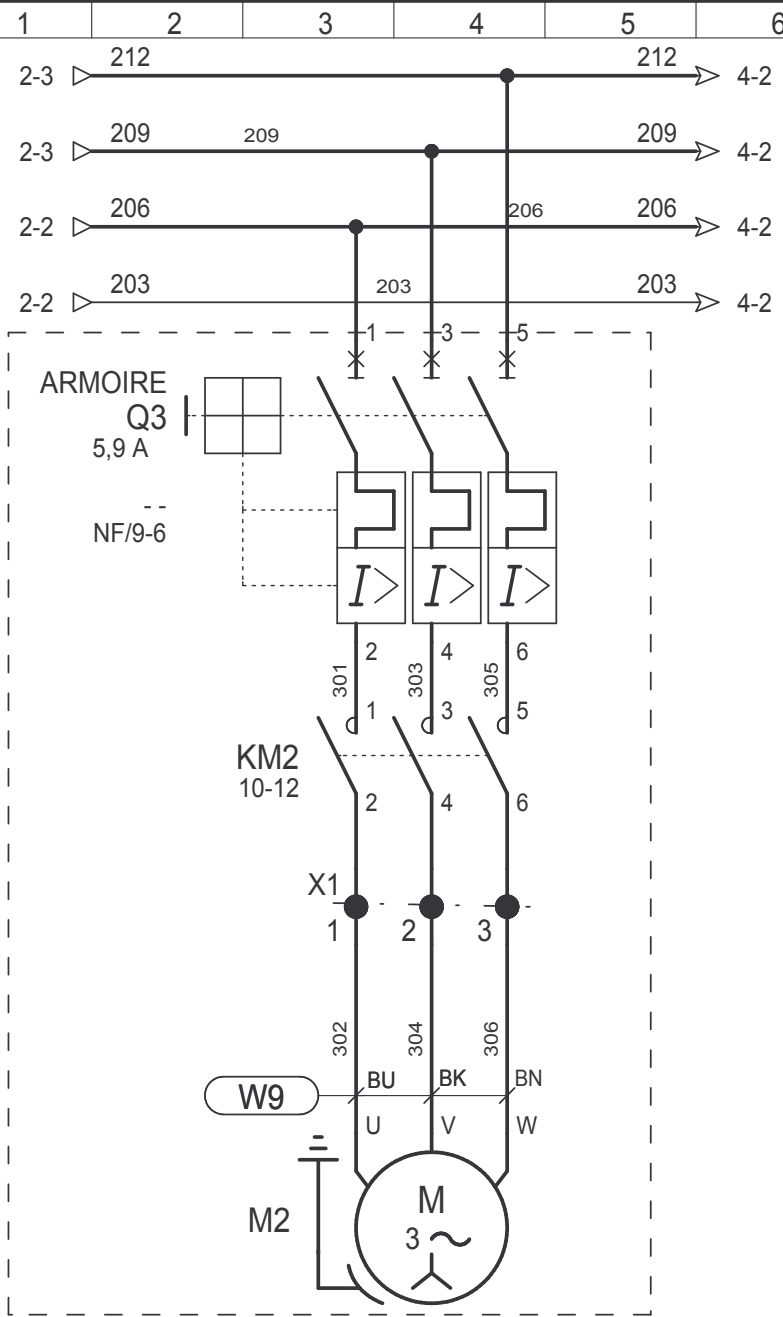




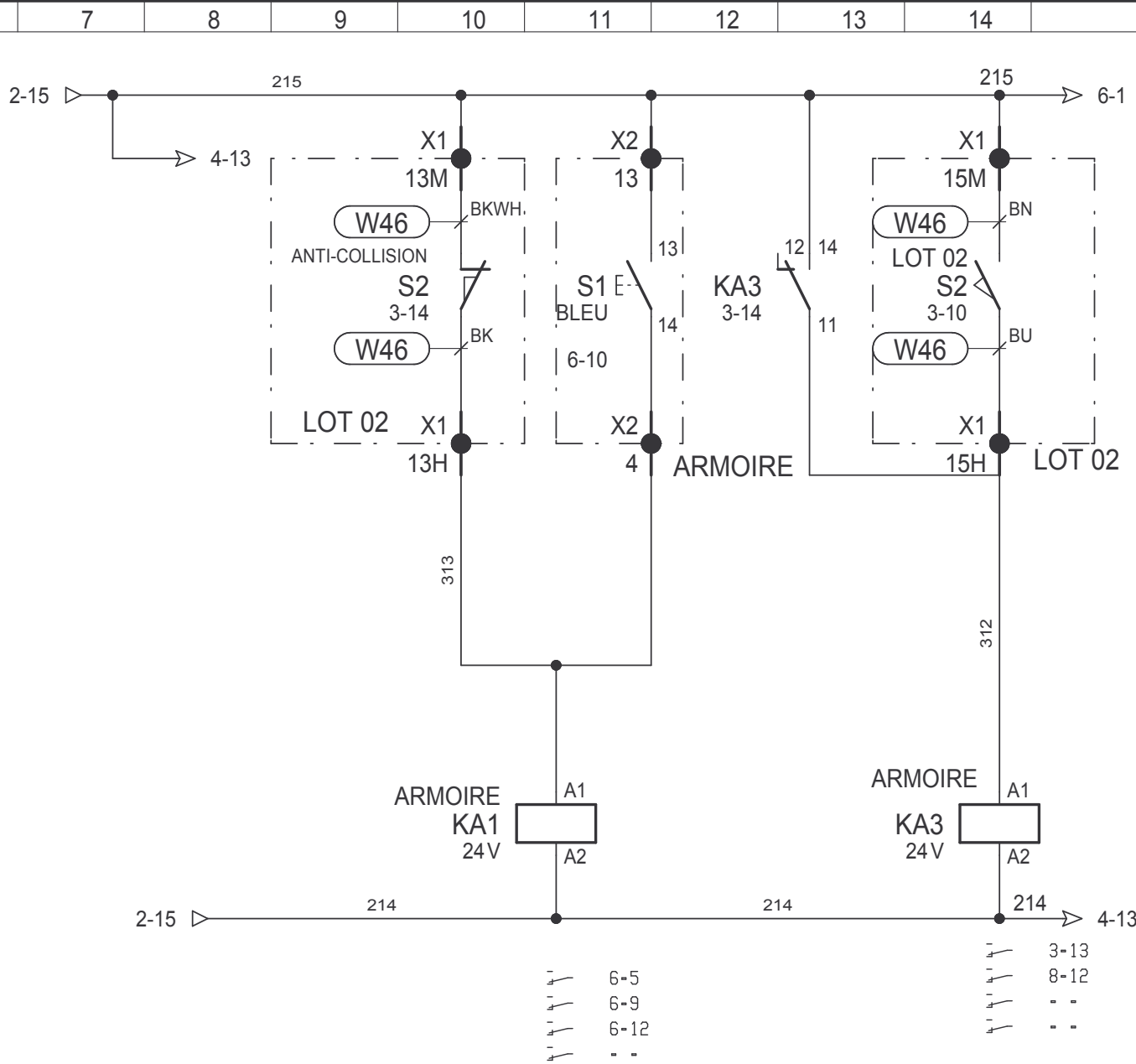
BM10 -BANC DE TESTS  
ALIMENTATION

Etabli par: CJ	Date : 23/09/2005	SCBM1000001D	
Modifications		Date	Etabli par
Edition originale		23/09/2005	JMN
MODIF DIVERSES		27/02/2006	JMN
CORRECTIONS		03/04/2006	JMN
corrections		12/05/2006	JMN





OPTION Groupe hydraulique  
2,2k W / 400V / 6A

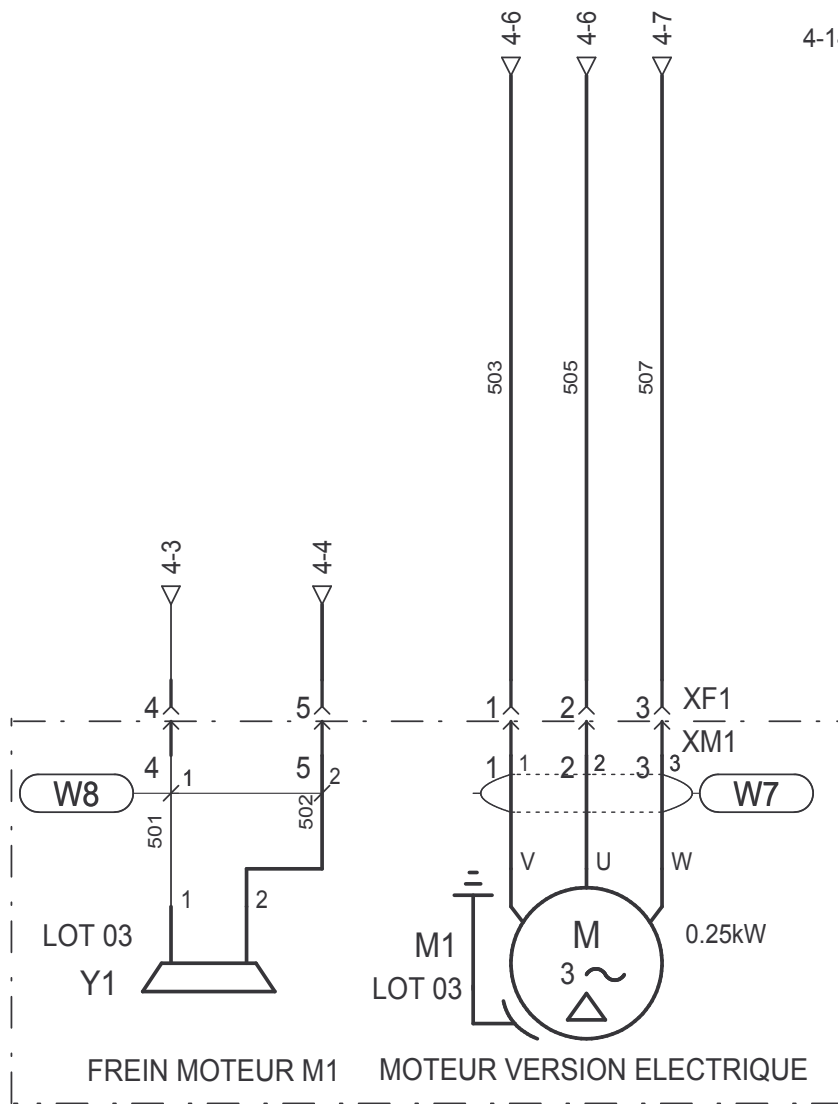


Relayage  
Capteur de collision

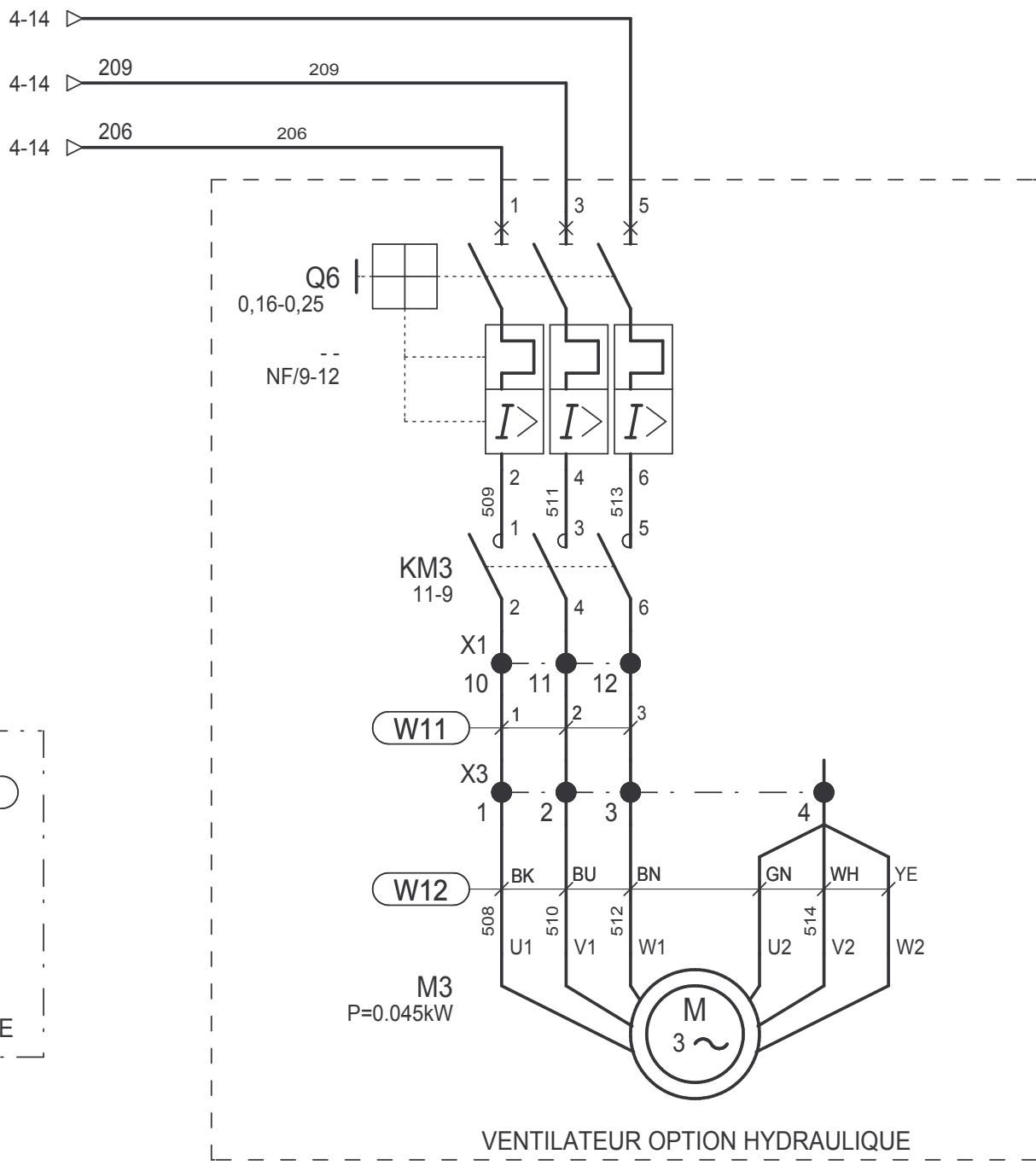
Mémorisation  
défaut collision

Etabli par: CJ	Date : 23/09/2005	SCBM1000001D	
Modifications		Date	Etabli par
Edition originale		23/09/2005	JMN
MODIF DIVERSES		27/02/2006	JMN
CORRECTIONS		03/04/2006	JMN
corrections		12/05/2006	JMN



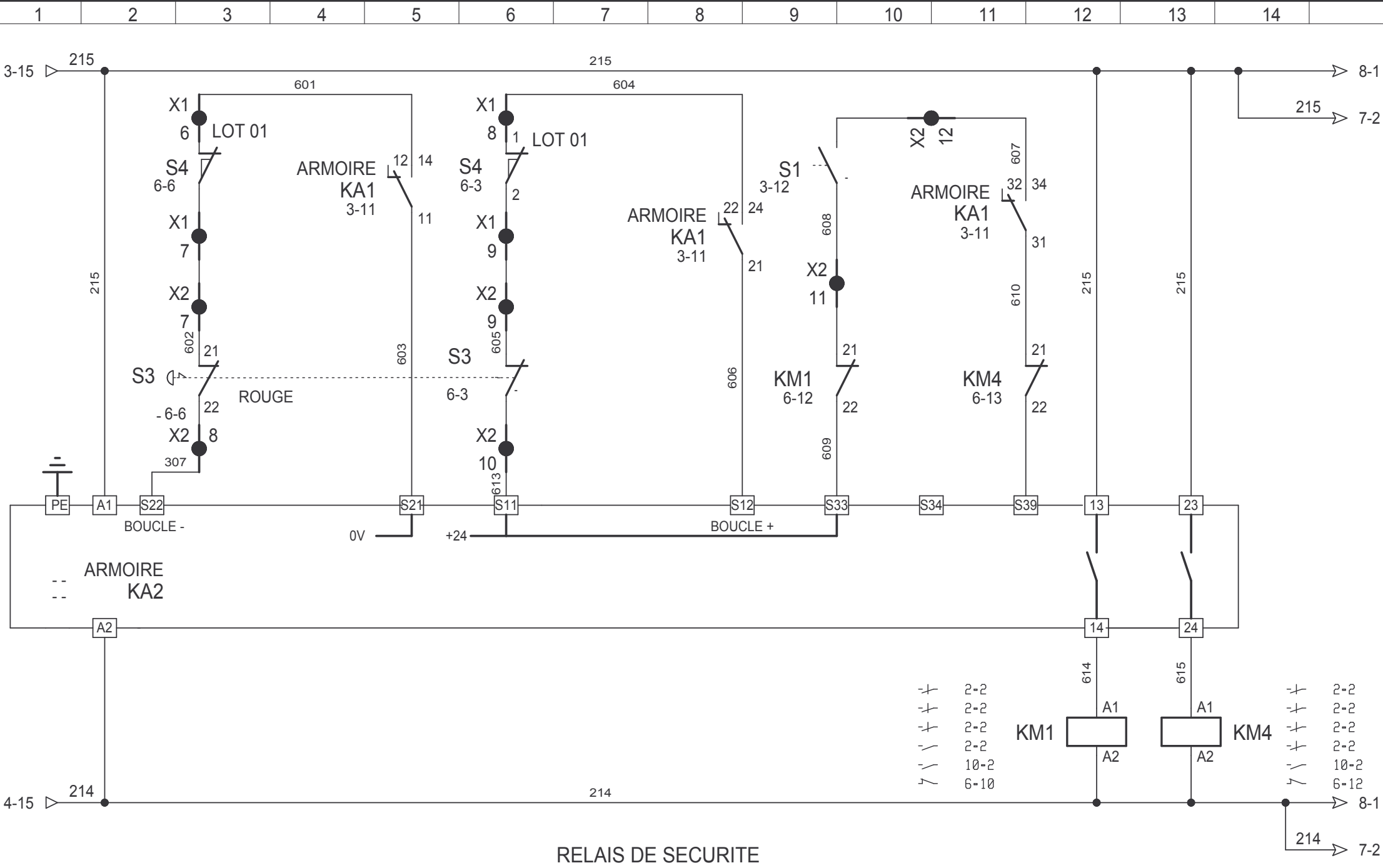


OPTION MOTORISATION ELECTRIQUE



VENTILATEUR OPTION HYDRAULIQUE

Etabli par: CJ	Date :	SCBM1000001D	
Modifications		Date	Etabli par
MODIF DIVERSES		27/02/2006	JMN
CORRECTIONS		03/04/2006	JMN
corrections		12/05/2006	JMN



BM10 -BANC DE TESTS  
 MODULE DE SECURITE

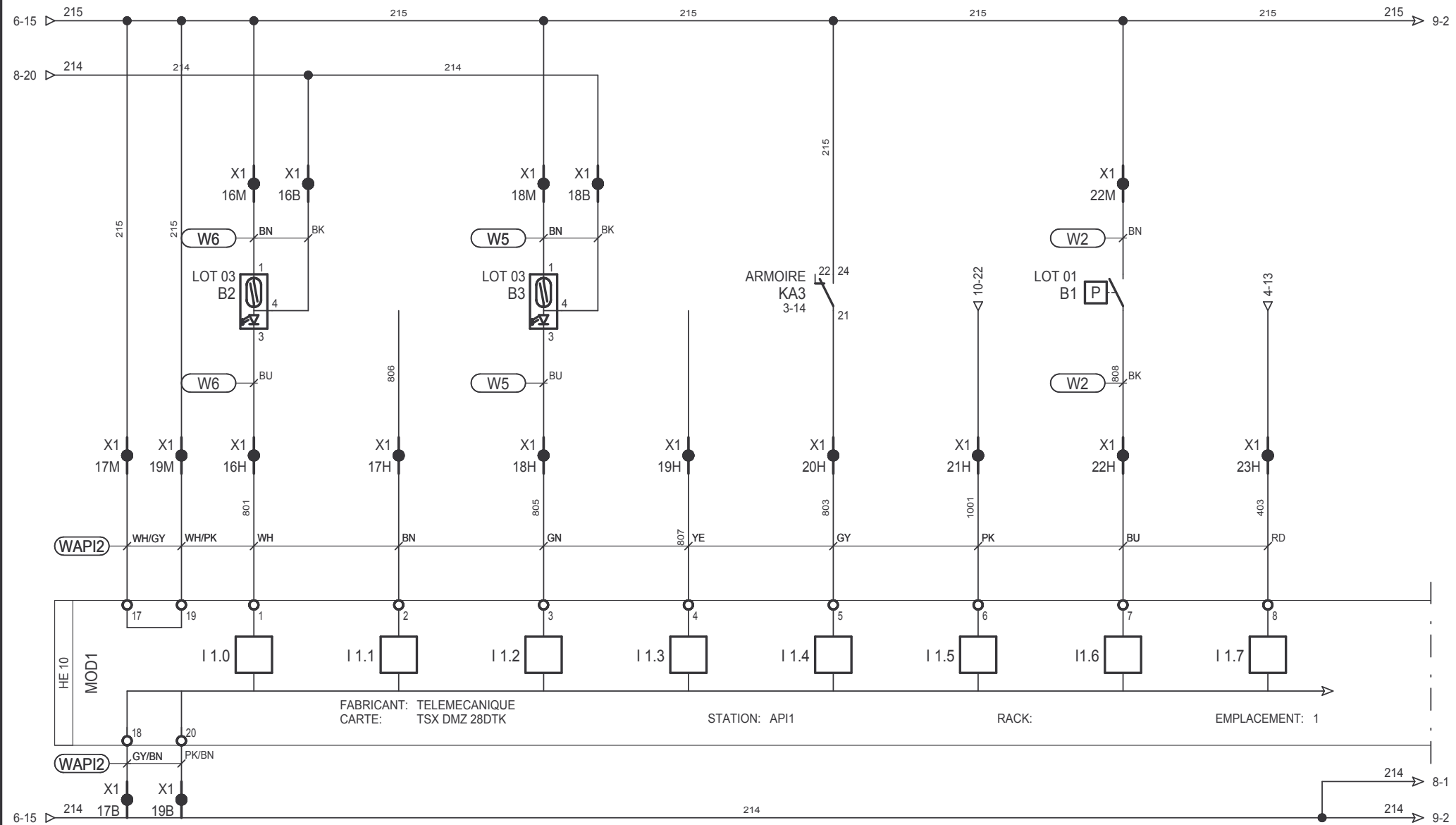
Etabli par: CJ	Date :	SCBM1000001D	
Modifications		Date	Etabli par
MODIF DIVERSES		27/02/2006	JMN
CORRECTIONS		03/04/2006	JMN
corrections		12/05/2006	JMN







ILS VERIN DE CHOC EN POSITION BASSE OPTION ELECTRIQUE	RESERVE	ILS VERIN DE CHOC EN POSITION INITIALE OPTION ELECTRIQUE	RESERVE	DEFAUT COLLISION mémorisation	ARRET D'URGENCE	DEFAUT AIR COMPRIME	DEFAUT VARIATEUR OPTION ELECTRIQUE
	-						



FABRICANT: TELEMECANIQUE  
CARTE: TSX DMZ 28DTK

STATION: API1

RACK:

EMPLACEMENT: 1

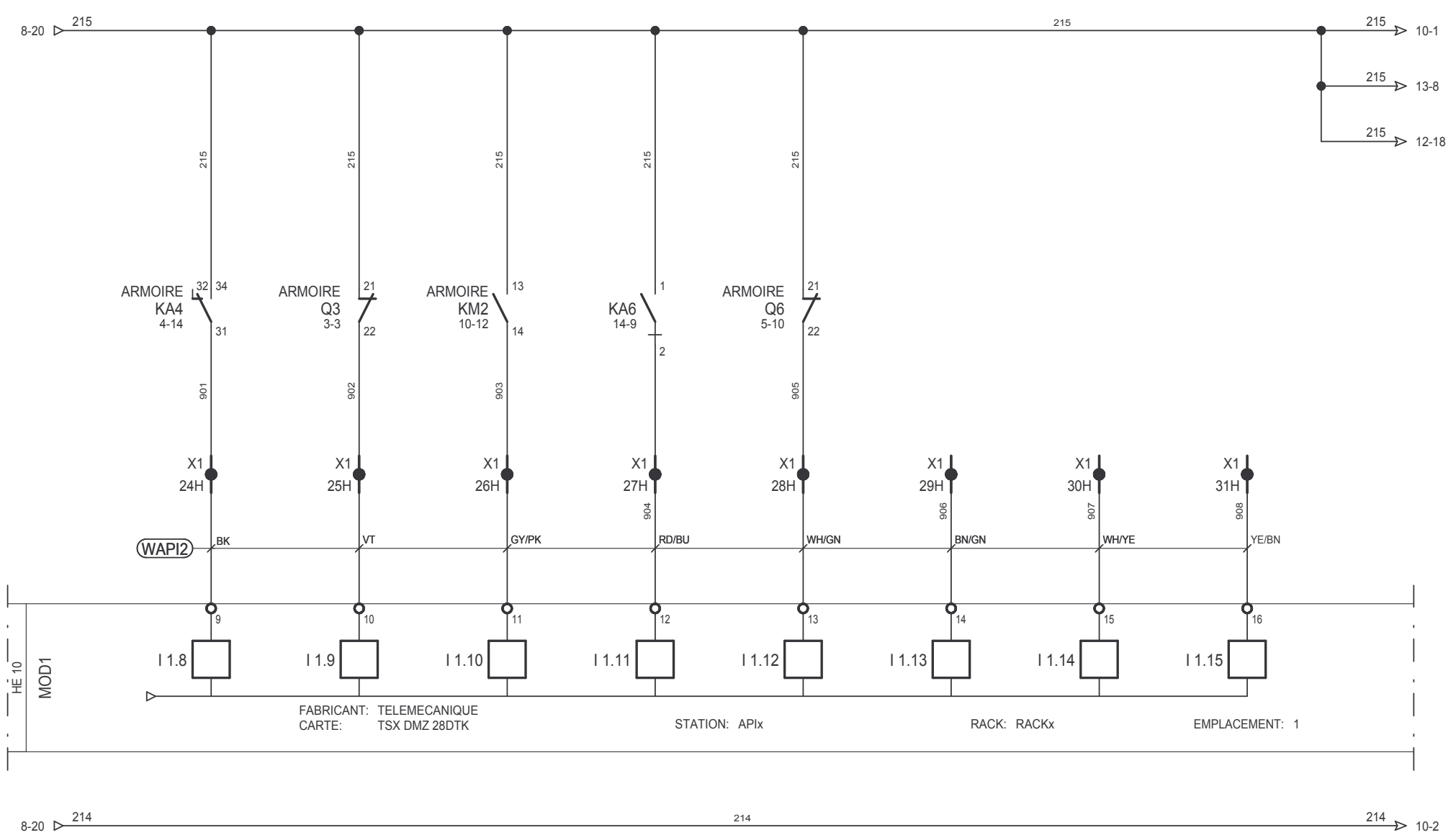
# BM10 -BANC DE TESTS

## ENTREES 1

Etabli par: CJ	Date :	SCBM1000001D	
Modifications		Date	Etabli par
MODIF DIVERSES		27/02/2006	JMN
CORRECTIONS		03/04/2006	JMN
corrections		12/05/2006	JMN



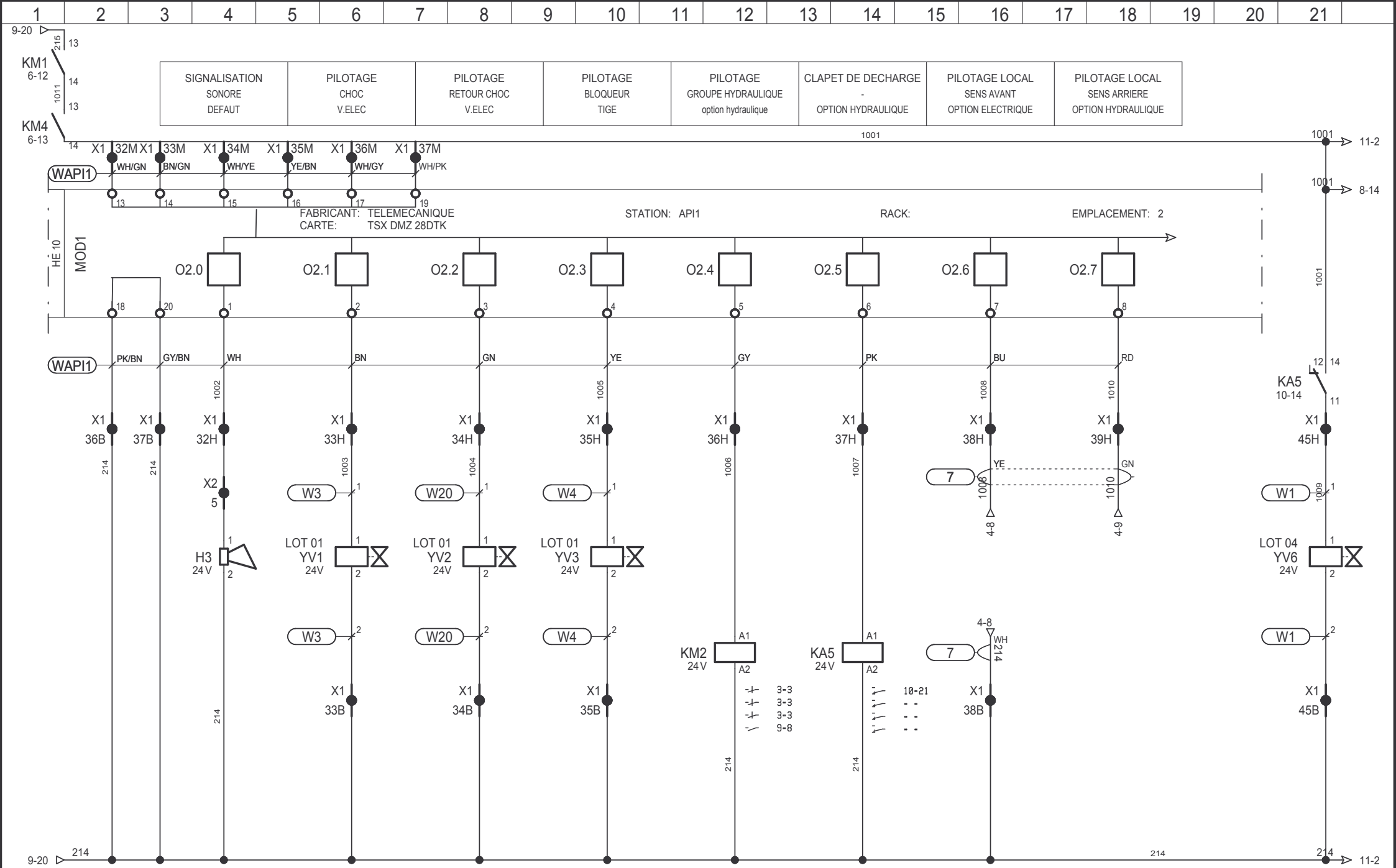
ETAT RELAIS FREIN OPTION ELECTRIQUE	DEFAULT GROUPE HYDRAULIQUE OPTION HYDRAULIQUE	PILOTAGE GROUPE OPTION HYDRAULIQUE	POSITION ATTEINTE OPTION HYDRAULIQUE	DEFAULT VENTILATEUR OPTION HYDRAULIQUE	RESERVE -	RESERVE -	RESERVE -
---	---	--	--	--	--------------	--------------	--------------



BM10 -BANC DE TESTS  
ENTREES 2

Etabli par: CJ	Date :	SCBM1000001D	
Modifications		Date	Etabli par
MODIF DIVERSES		27/02/2006	JMN
CORRECTIONS		03/04/2006	JMN
corrections		12/05/2006	JMN



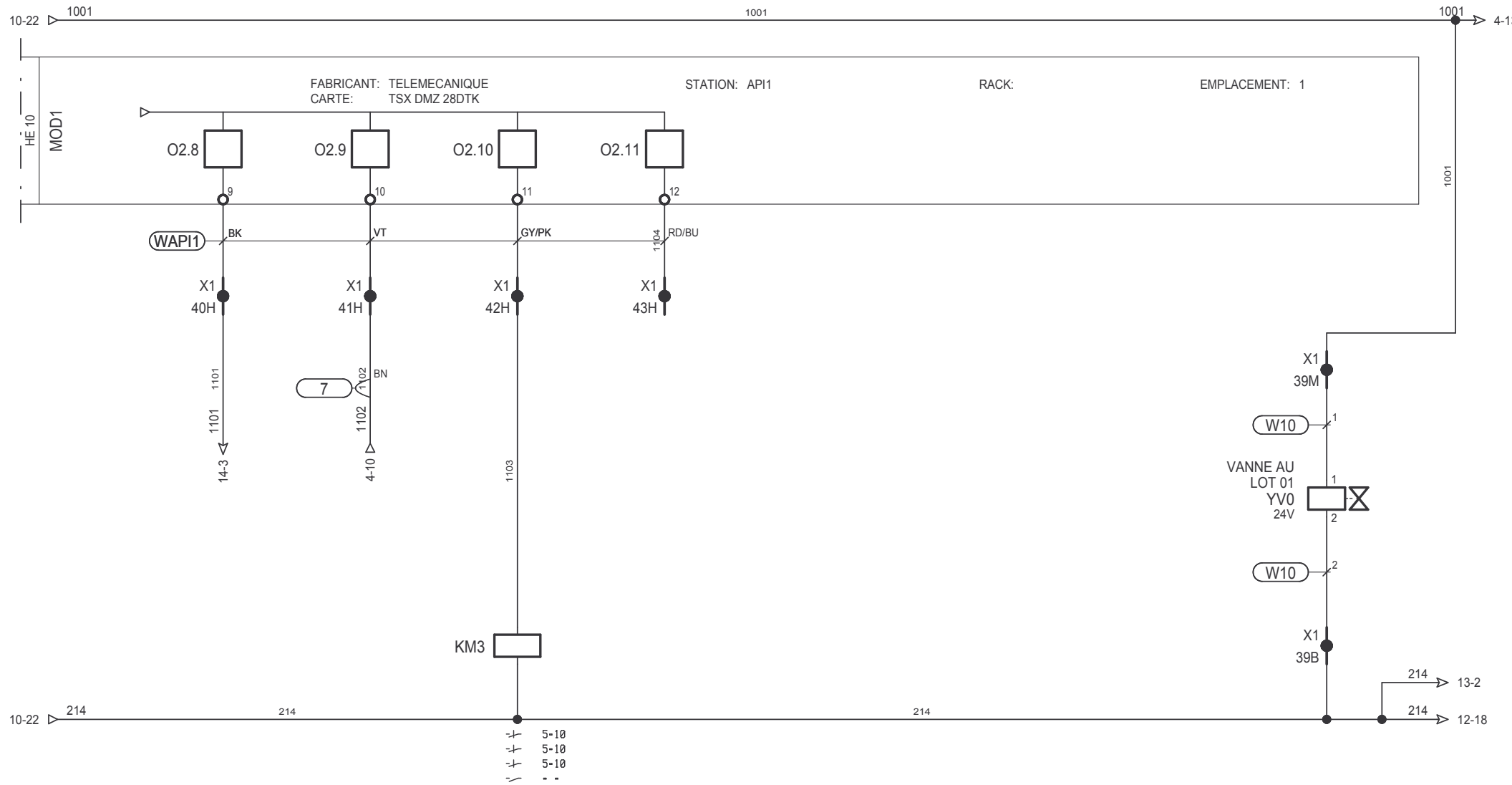


**BM10 -BANC DE TESTS**  
**SORTIES 1**

Etabli par: CJ	Date : 17/10/2005	SCBM1000001D	
Modifications		Date	Etabli par
MODIF CABLE		17/10/2005	JMN
MODIF DIVERSES		27/02/2006	JMN
CORRECTIONS		03/04/2006	JMN
corrections		12/05/2006	JMN



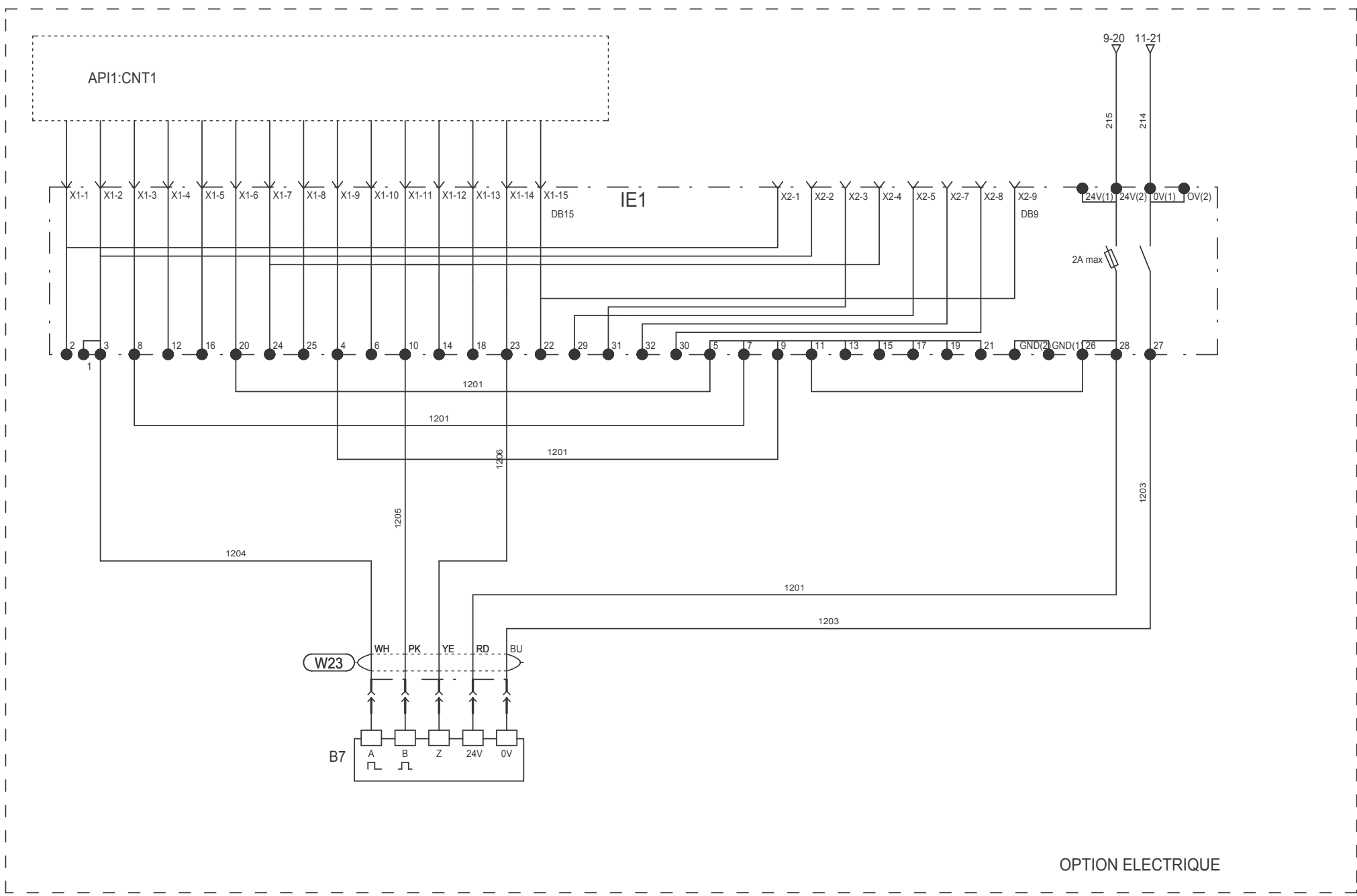
VALIDATION AMPLI. PROP. OPTION HYDRAULIQUE	FORCAGE LOCAL VARIATEUR OPTION ELECTRIQUE	PILOTAGE VENTILATEUR OPTION HYDRAULIQUE	RESERVE - -				
--	---	---	-------------------	--	--	--	--



BM10 -BANC DE TESTS  
SORTIES 2

Etabli par: CJ	Date : 17/10/2005	SCBM1000001D	
Modifications		Date	Etabli par
MODIF CABLE		17/10/2005	JMN
MODIF DIVERSES		27/02/2006	JMN
CORRECTIONS		03/04/2006	JMN
corrections		12/05/2006	JMN

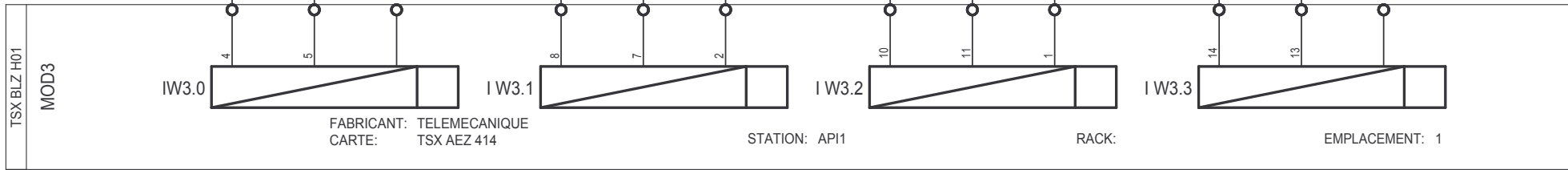
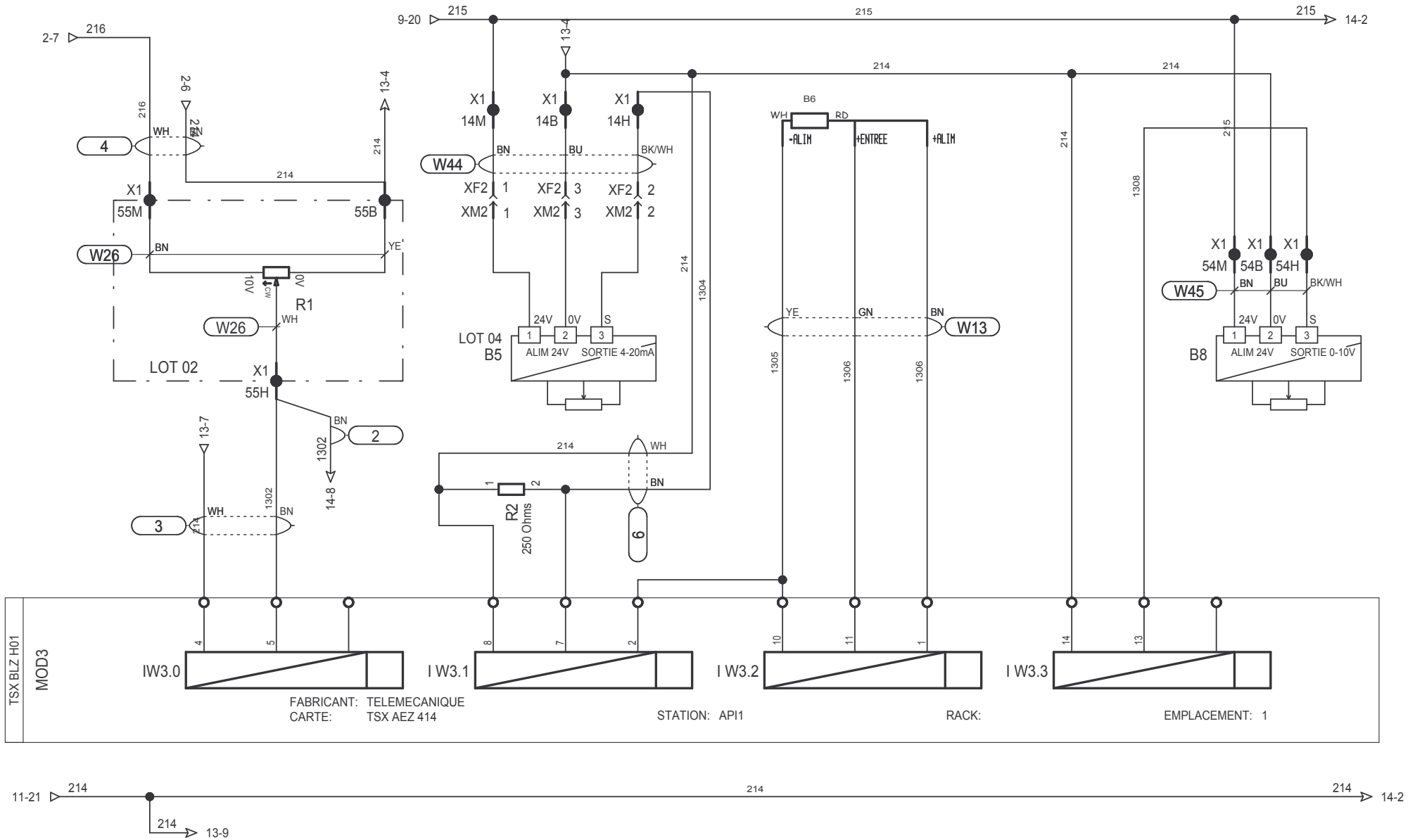
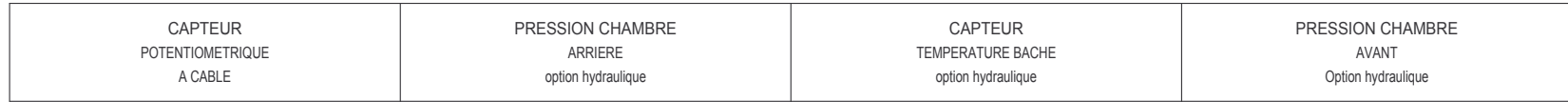




OPTION ELECTRIQUE

Etabli par: CJ	Date : 17/10/2005	SCBM1000001D	
Modifications		Date	Etabli par
MODIF RACCORDEMENTS		17/10/2005	JMN
MODIF DIVERSES		27/02/2006	JMN
CORRECTIONS		03/04/2006	JMN
corrections		12/05/2006	JMN





BM10 -BANC DE TESTS  
ENTREES ANA

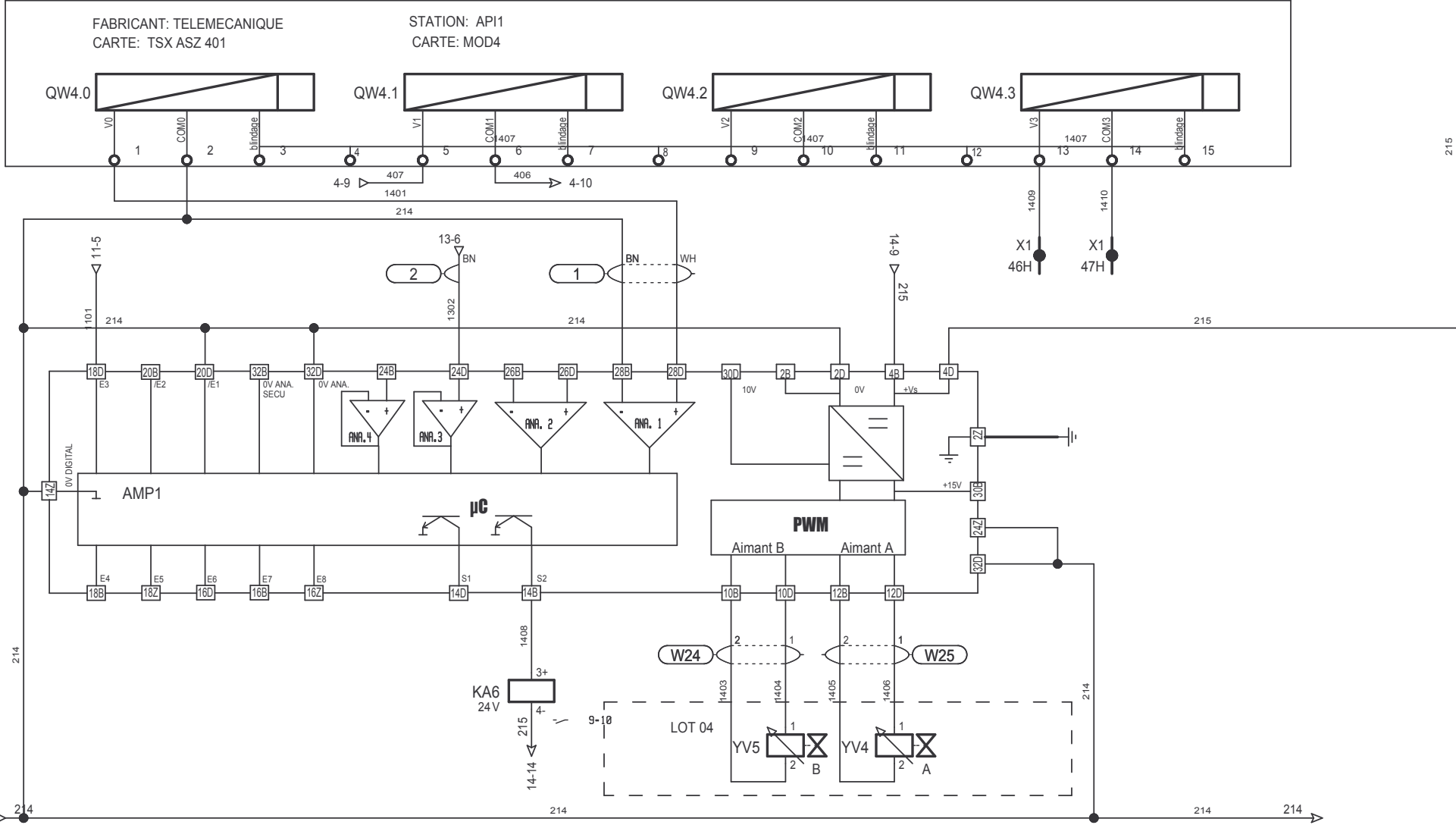
Etabli par: CJ	Date :	SCBM1000001D	
Modifications		Date	Etabli par
MODIF DIVERSES		27/02/2006	JMN
CORRECTIONS		03/04/2006	JMN
corrections		12/05/2006	JMN



CONSIGNE AMPLI. PROP. option hydraulique	CONSIGNE FREQUENCE OPTION MOTORISATION ELECTRIQUE CABLEE	RESERVE	RESERVE ACTIVITE CABLAGE ELEVE
--	--	---------	--------------------------------------

13-20 ▷ 215

215



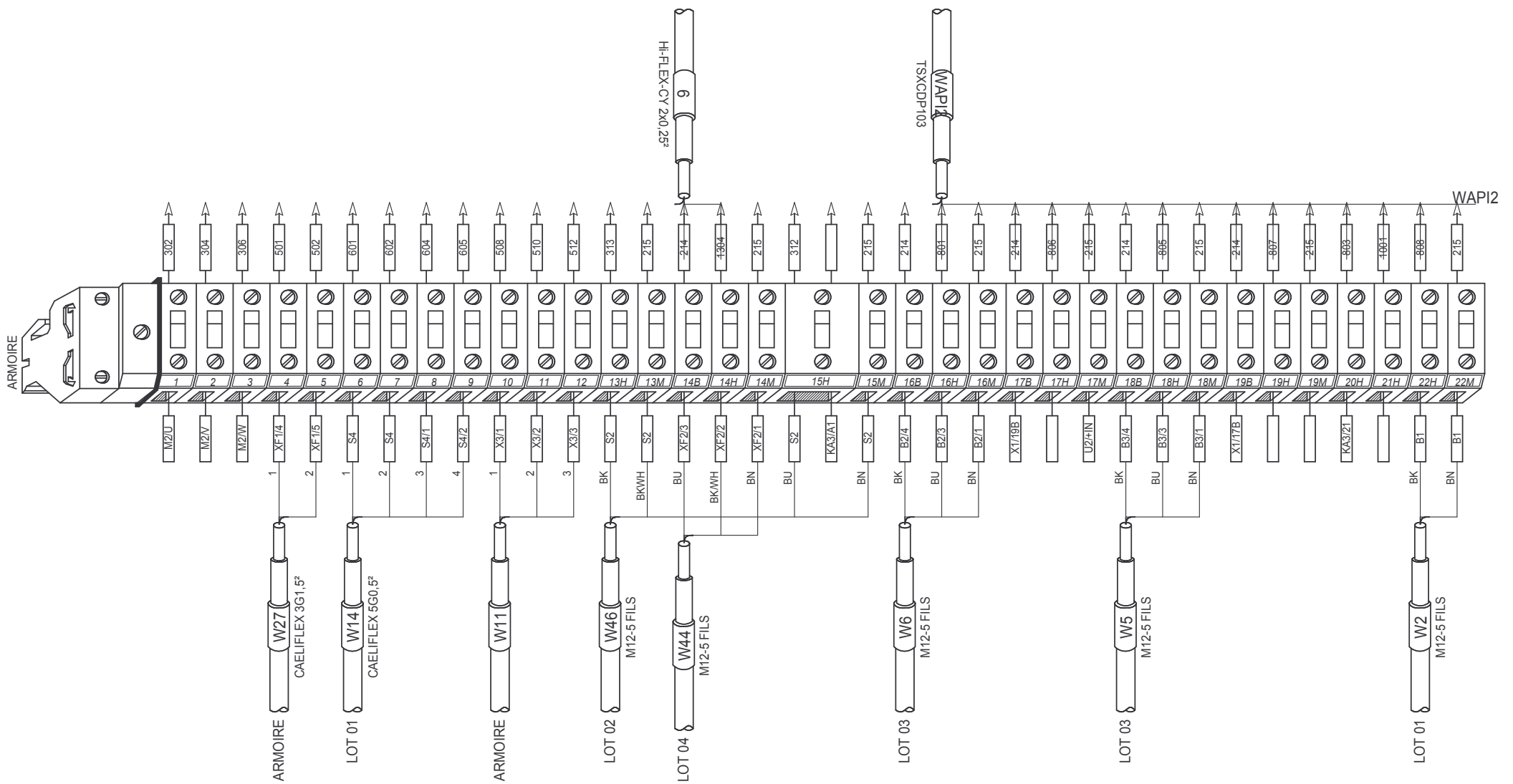
13-20 ▷ 214

Electrovannes proportionnelles  
 descente                      montée

BM10 -BANC DE TESTS  
 SORTIES ANA

Etabli par: CJ	Date : 17/10/2005	SCBM1000001D	
Modifications		Date	Etabli par
MODIF RACCORDEMENTS		17/10/2005	JMN
MODIF DIVERSES		27/02/2006	JMN
CORRECTIONS		03/04/2006	JMN
corrections		12/05/2006	JMN



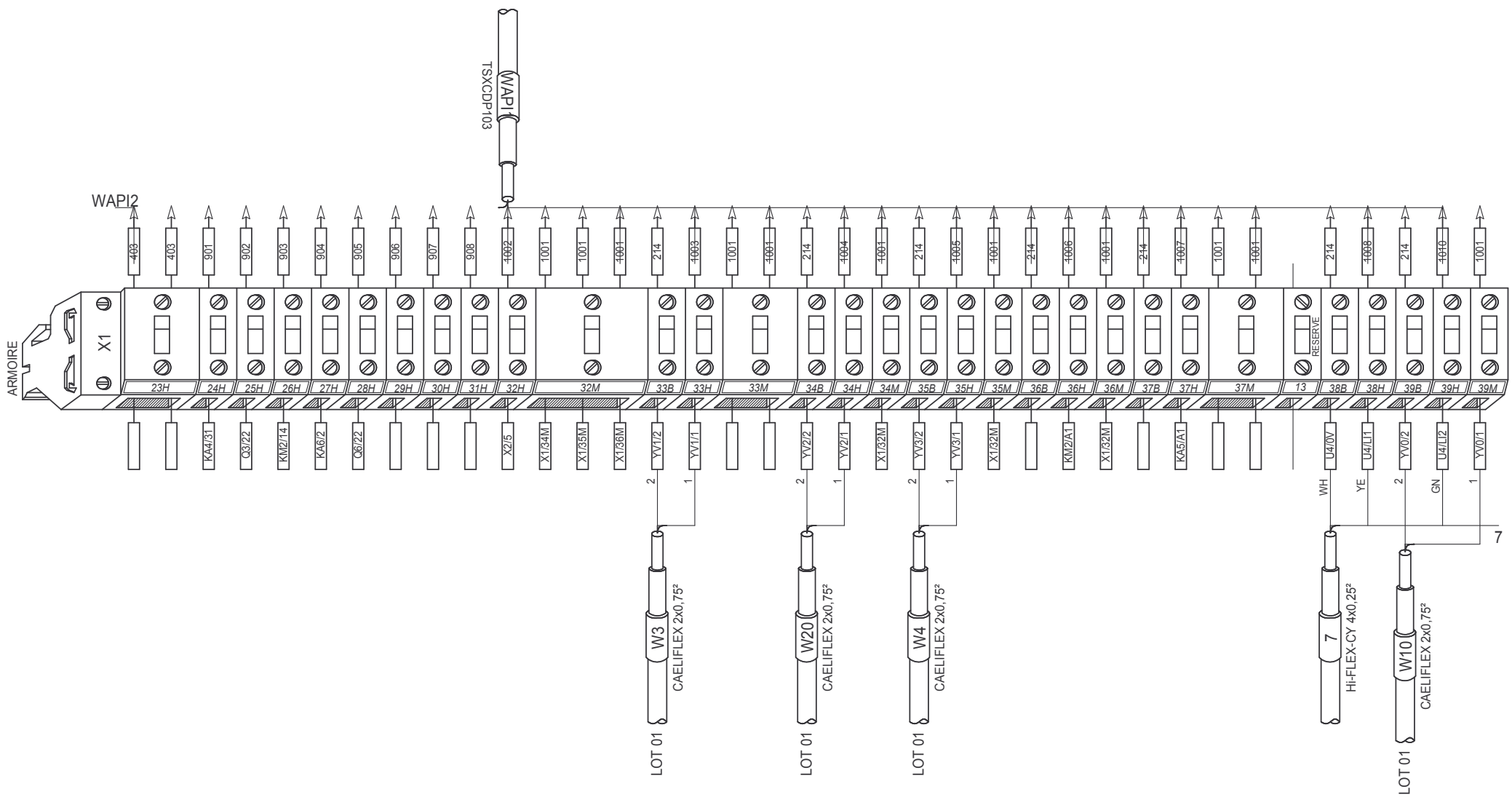


BM10 -BANC DE TESTS  
Bornier : X1

Etabli par:	Date : 27/02/2006	SCBM100001D	
Modifications		Date	Etabli par
MODIF DIVERSES		27/02/2006	JMN
CORRECTIONS		03/04/2006	JMN
corrections		12/05/2006	JMN





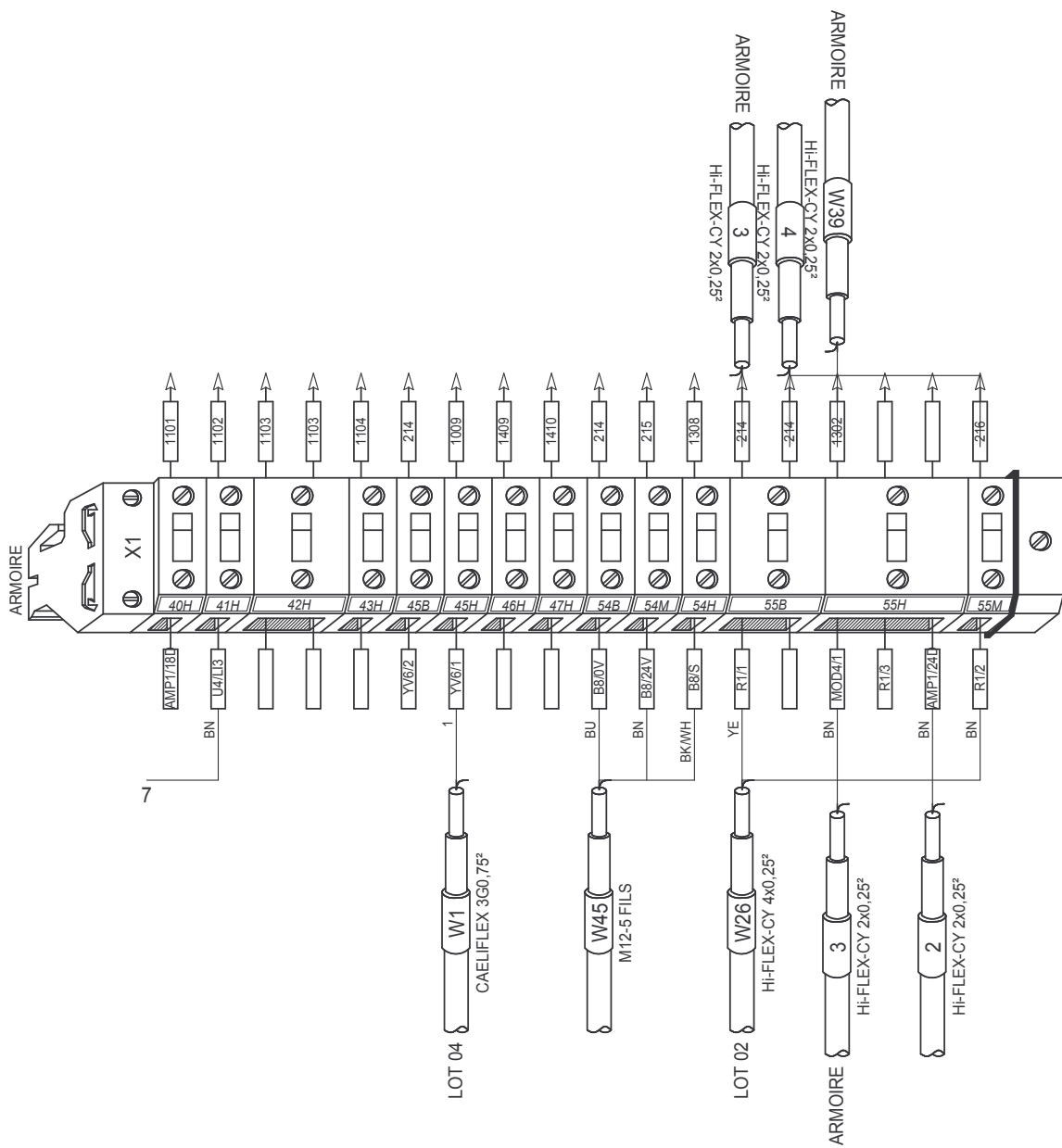


BM10 -BANC DE TESTS

Bornier : X1

Etabli par:	Date : 27/02/2006	SCBM1000001D	
Modifications		Date	Etabli par
MODIF DIVERSES		27/02/2006	JMN
CORRECTIONS		03/04/2006	JMN
corrections		12/05/2006	JMN



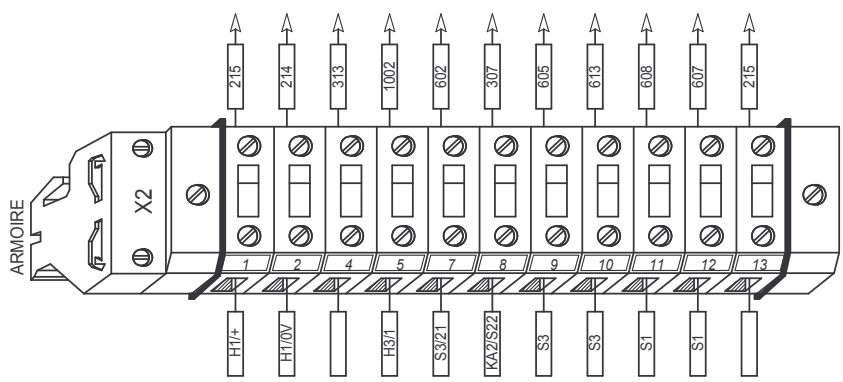


BM10 -BANC DE TESTS

Bornier : X1

Etabli par:	Date : 27/02/2006	SCBM1000001D	
Modifications		Date	Etabli par
MODIF DIVERSES		27/02/2006	JMN
CORRECTIONS		03/04/2006	JMN
corrections		12/05/2006	JMN



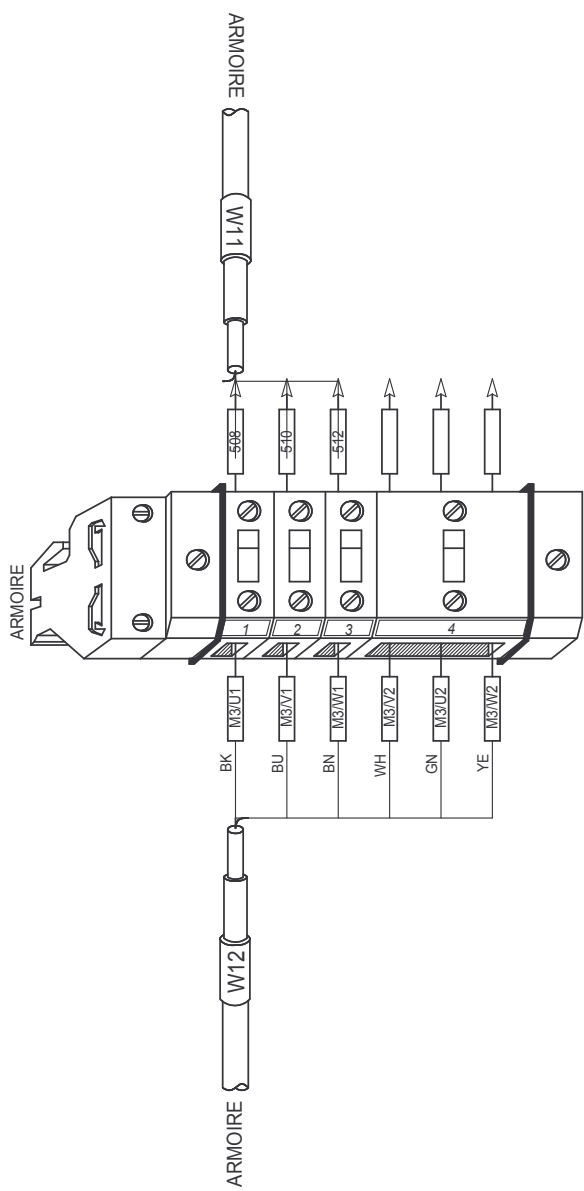


BM10 -BANC DE TESTS

Bornier : X2

Etabli par:	Date : 27/02/2006	SCBM1000001D	
Modifications		Date	Etabli par
MODIF DIVERSES		27/02/2006	JMN
CORRECTIONS		03/04/2006	JMN
corrections		12/05/2006	JMN



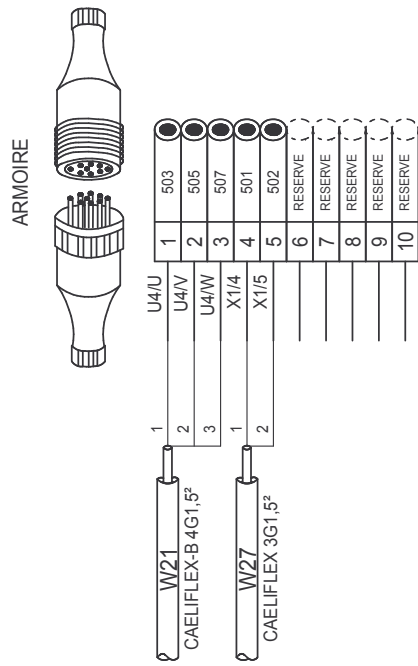


BM10 -BANC DE TESTS

Bornier : X3

Etabli par:	Date : 27/02/2006	SCBM1000001D	
Modifications		Date	Etabli par
MODIF DIVERSES		27/02/2006	JMN
CORRECTIONS		03/04/2006	JMN
corrections		12/05/2006	JMN



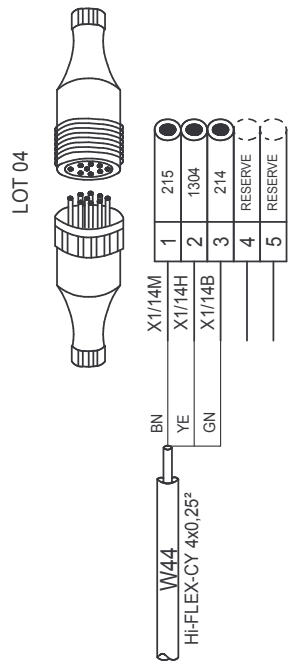


BM10 -BANC DE TESTS

Connecteur : XF1

Etabli par:	Date : 27/02/2006	SCBM1000001D	
Modifications		Date	Etabli par
MODIF DIVERSES		27/02/2006	JMN
CORRECTIONS		03/04/2006	JMN
corrections		12/05/2006	JMN



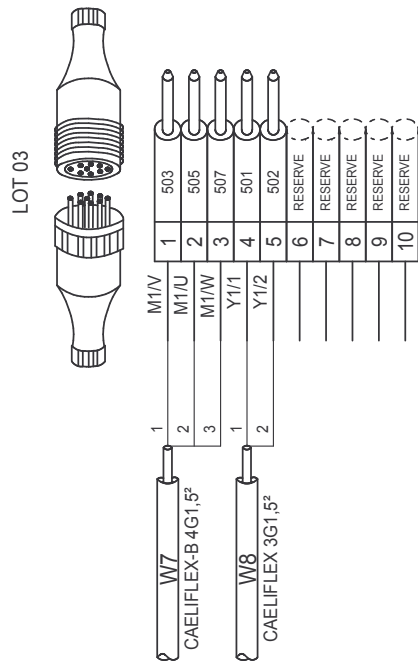


BM10 -BANC DE TESTS

Connecteur : XF2

Etabli par:	Date : 27/02/2006	SCBM1000001D	
Modifications		Date	Etabli par
MODIF DIVERSES		27/02/2006	JMN
CORRECTIONS		03/04/2006	JMN
corrections		12/05/2006	JMN



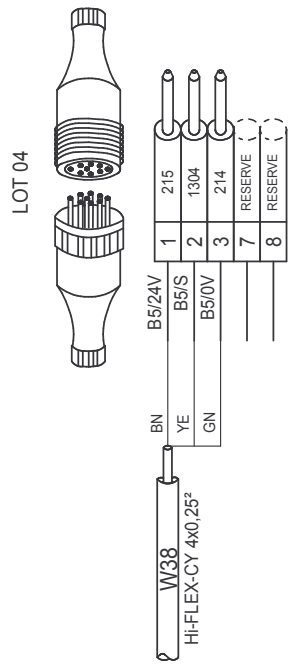


BM10 -BANC DE TESTS

Connecteur : XM1

Etabli par:	Date : 27/02/2006	SCBM1000001D	
Modifications		Date	Etabli par
MODIF DIVERSES		27/02/2006	JMN
CORRECTIONS		03/04/2006	JMN
corrections		12/05/2006	JMN





BM10 -BANC DE TESTS

Connecteur : XM2

Etabli par:	Date : 27/02/2006	SCBM1000001D	
Modifications		Date	Etabli par
MODIF DIVERSES		27/02/2006	JMN
CORRECTIONS		03/04/2006	JMN
corrections		12/05/2006	JMN

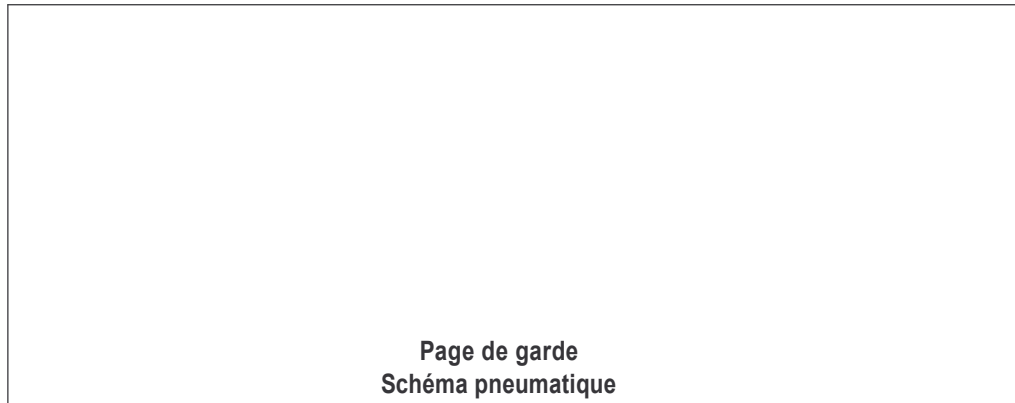
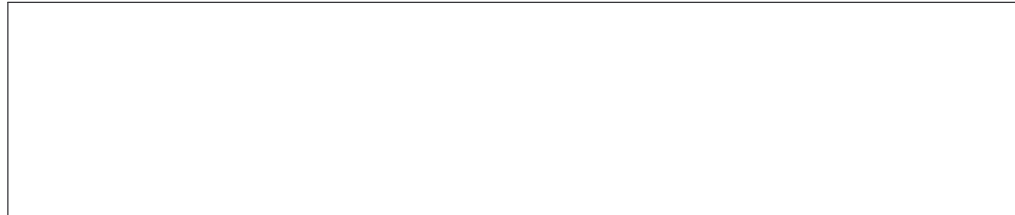




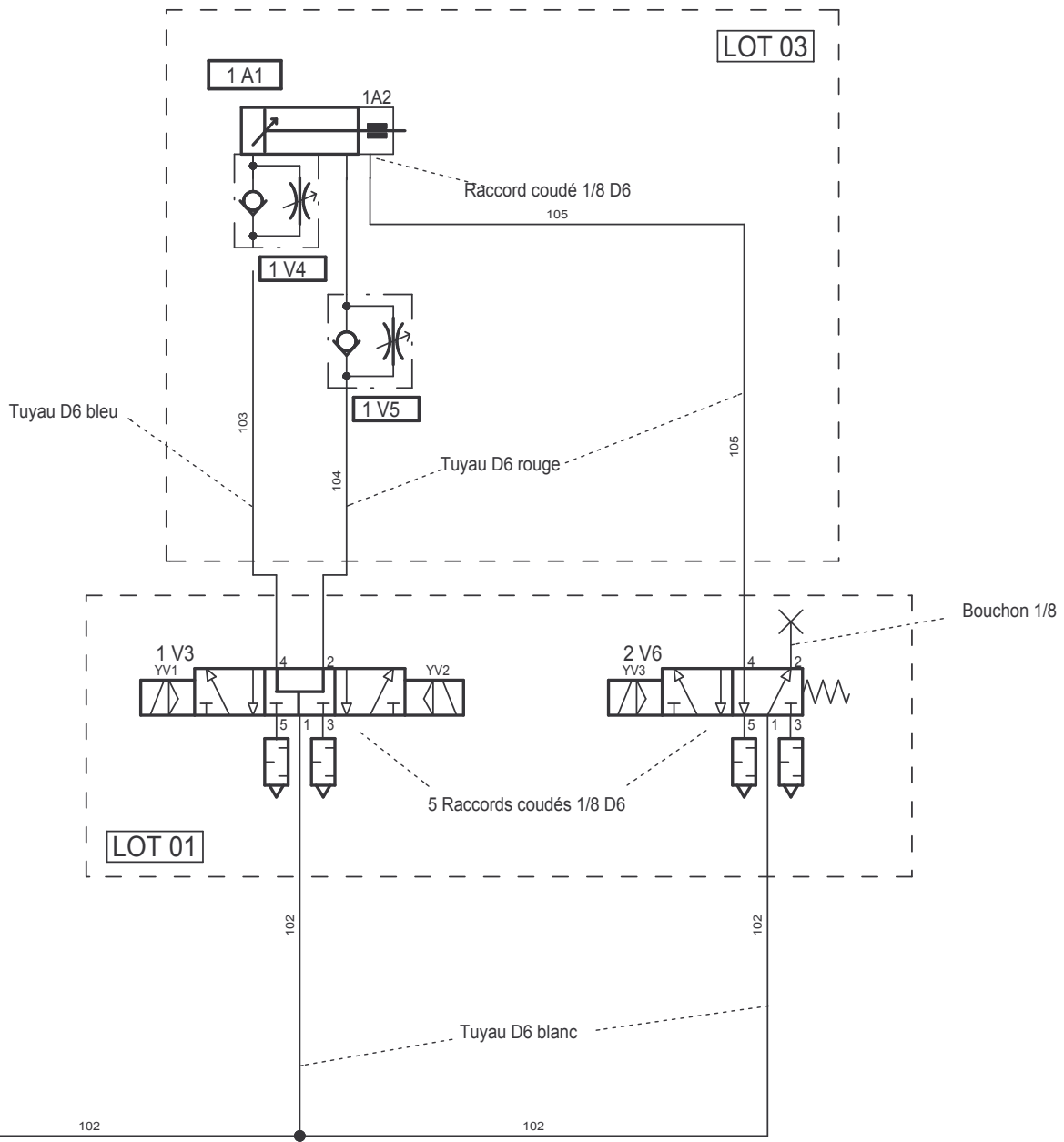
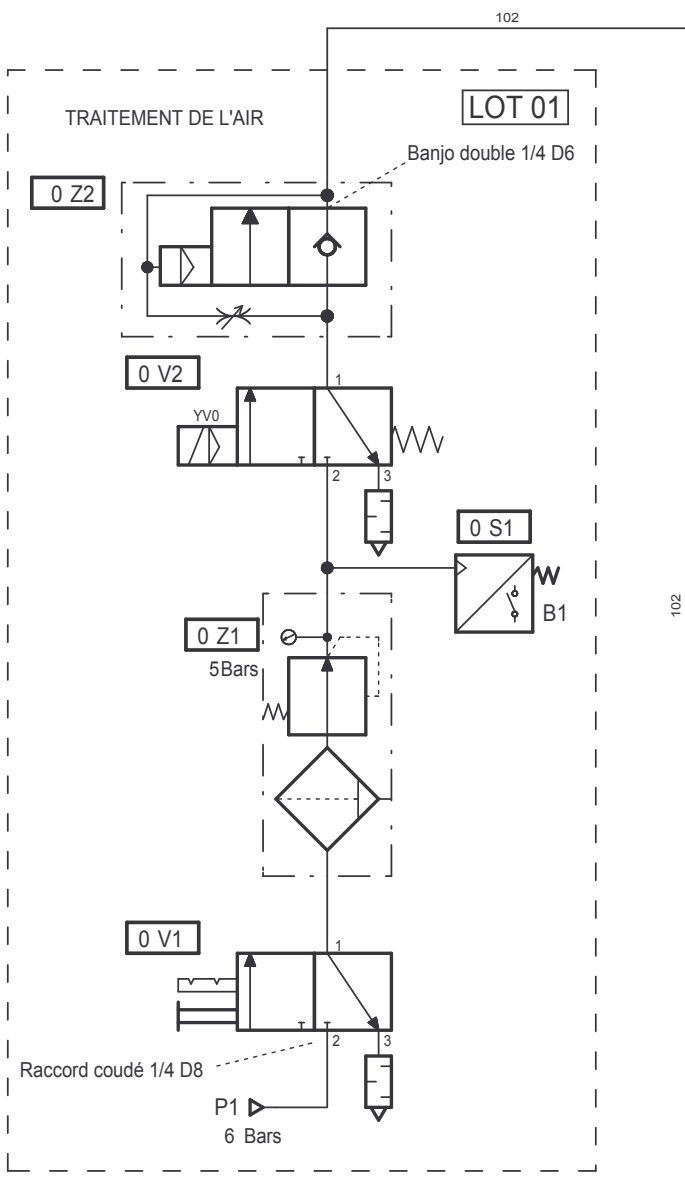
G	corrections	12/05/2006	JMN		
F	CORRECTIONS	03/04/2006	JMN		
E	MODIF DIVERSES	27/02/2006	JMN		
A	MODIF COMMUN EV	19/11/2004	JMN		
INDICE	MODIFICATION	DATE	DESSINE	VERIFIE	APPROUVE



<b>DESSINE:</b> CJ
<b>VERIFIE:</b>
<b>DATE DE CREATION:</b>
<b>AFFAIRE N°:</b>



<b>SCBM1000001D</b>	<b>0 / 2</b>
---------------------	--------------



Etabli par: CJ	Date :	SCBM1000001D	
Modifications		Date	Etabli par
MODIF DIVERSES		27/02/2006	JMN
CORRECTIONS		03/04/2006	JMN

G	corrections	12/05/2006	JMN		
F	CORRECTIONS	03/04/2006	JMN		
E	MODIF DIVERSES	27/02/2006	JMN		
B			CJ		
INDICE	MODIFICATION	DATE	DESSINE	VERIFIE	APPROUVE



automatismes industriels

280, Bd Edouard Daladier  
84 973 CARPENTRAS Cedex  
Tel.: 04 90 60 05 68  
Fax: 04 90 60 66 26

DESSINE: CJ

VERIFIE:

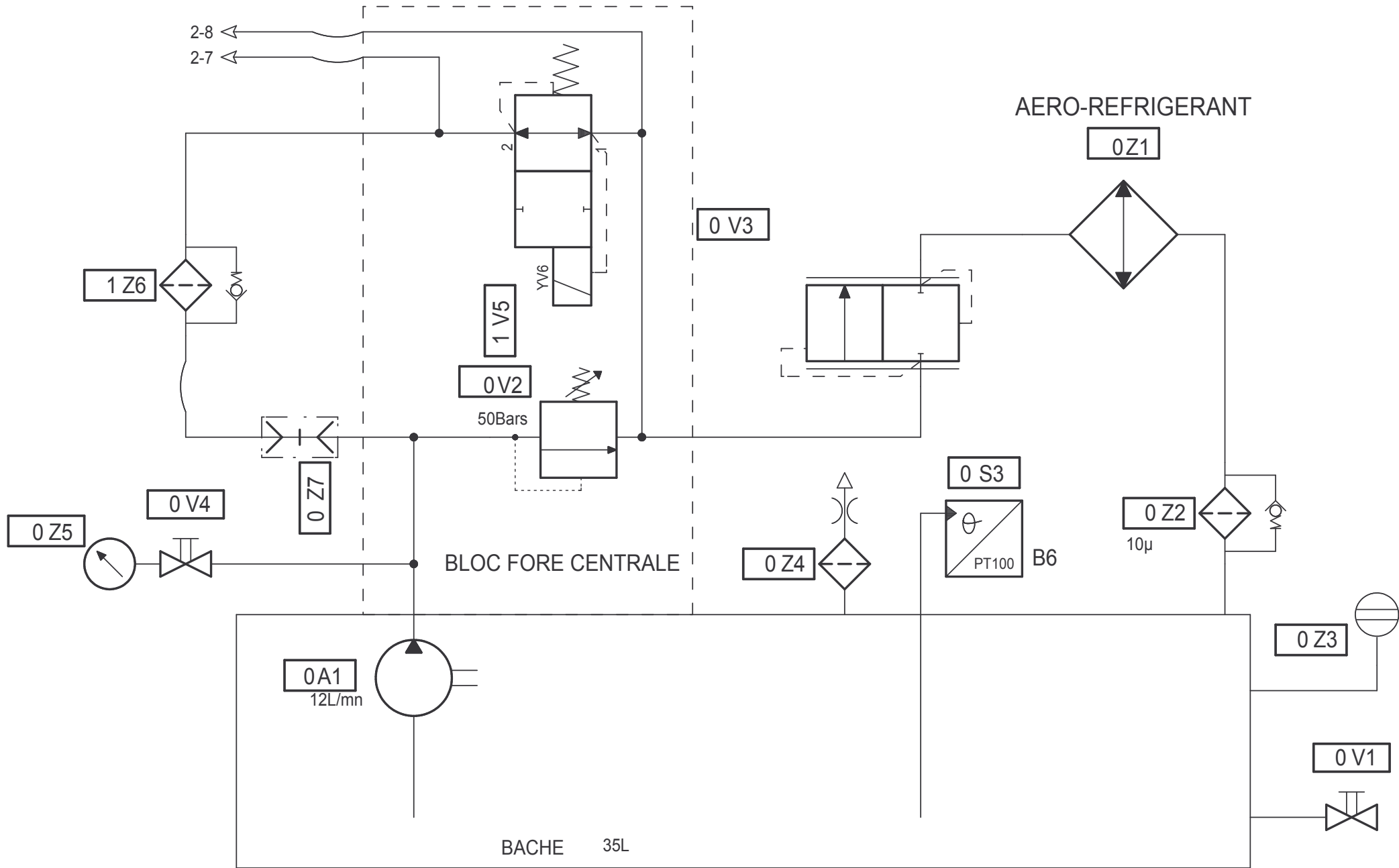
DATE DE CREATION:

AFFAIRE N°:

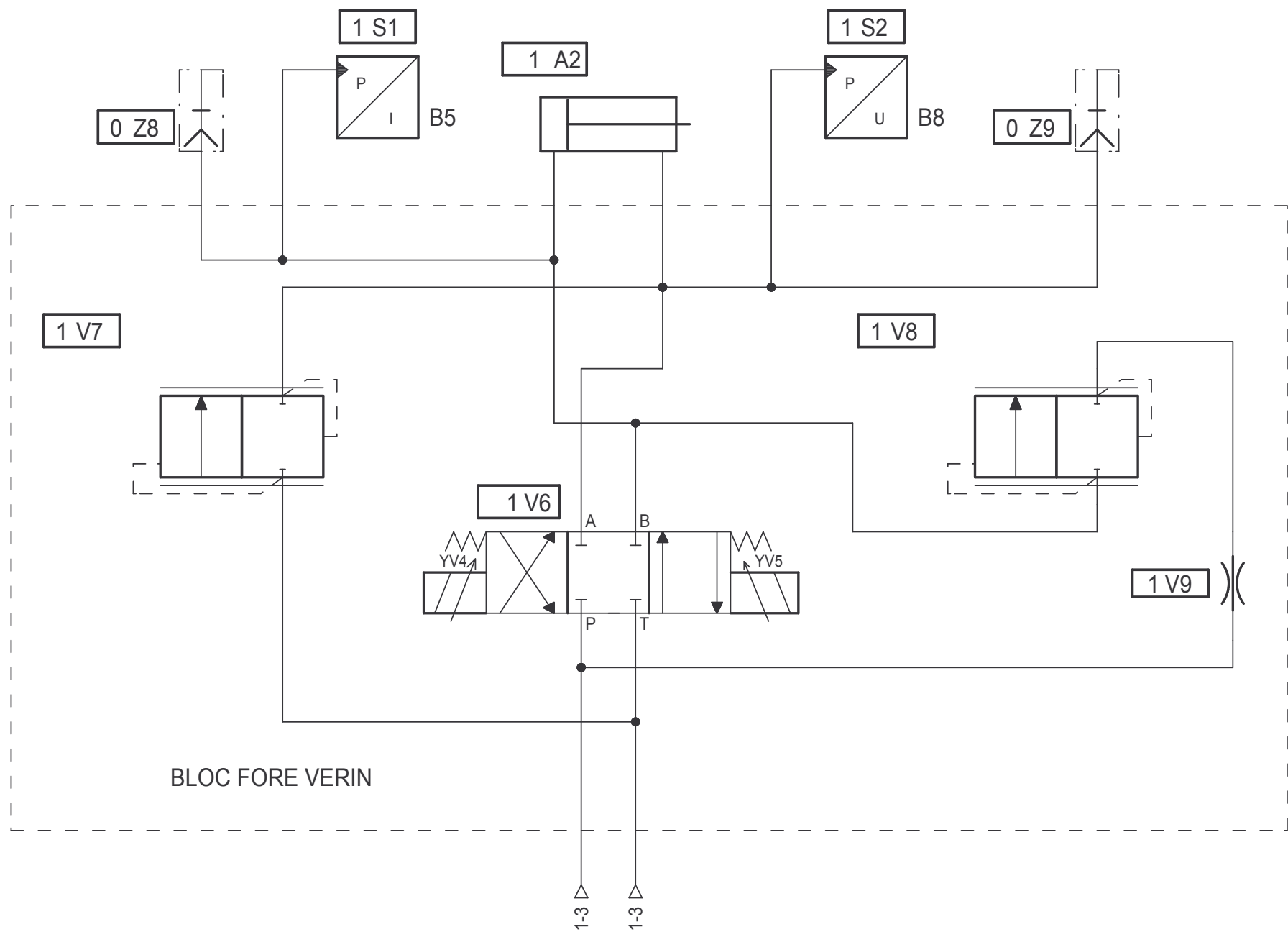
Page de garde  
Schéma hydraulique

SCBM1000001D

0 / 3



Etabli par: CJ	Date :	SCBM1000001D	
Modifications		Date	Etabli par
MODIF DIVERSES		27/02/2006	JMN
CORRECTIONS		03/04/2006	JMN
corrections		12/05/2006	JMN



BM10 -BANC DE TESTS

DISTRIBUTEUR PROPORTIONNEL + VERIN

Etabli par:	Date : 03/04/2006	SCBM1000001D	
Modifications		Date	Etabli par
CORRECTIONS		03/04/2006	JMN
corrections		12/05/2006	JMN

